



REGIONAL SPECIALISED METEOROLOGICAL CENTRE -TROPICAL CYCLONES, NEW DELHI TROPICAL WEATHER OUTLOOK

DEMS-RSMC TROPICAL CYCLONES NEW DELHI DATED 06.07.2025

TROPICAL WEATHER OUTLOOK FOR THE NORTH INDIAN OCEAN (THE BAY OF BENGAL AND THE ARABIAN SEA) VALID FOR THE NEXT 168 HOURS ISSUED AT 0600 UTC OF 06.07.2025 BASED ON 0300 UTC OF 06.07.2025.

BAY OF BENGAL:

Under the influence of yesterday's upper air cyclonic circulation over Gangetic West Bengal & neighborhood, a Low-Pressure Area formed over same region at 0300 UTC of today, 06th July 2025. The associated cyclonic circulation extended upto 7.6 km above mean sea level tilting southwestwards with height. It is likely to move slowly west-northwestwards across Jharkhand and north Chhattisgarh during next 2-3 days.

Scattered to broken low and medium clouds with embedded intense to very intense convection lay over North & Eastcentral Bay of Bengal and North Andaman Sea. Scattered low and medium clouds with embedded isolate moderate to intense convection lay over Westcentral Bay of Bengal and South Andaman Sea.

*PROBABILITY OF CYCLOGENESIS (FORMATION OF DEPRESSION) DURING NEXT 168 HRS:

24 HOURS	24-48 HOURS	48-72 HOURS	72-96 HOURS	96-120 HOURS	120-144 HOURS	144-168 HOURS
NIL	NIL	NIL	NIL	NIL	NIL	NIL

*NOTE: EVERY 24HR FORECAST IS VALID UPTO 0300 UTC (0830 IST) OF NEXT DAY

ARABIAN SEA:

Scattered low to medium-level clouds with embedded moderate to intense convection lay over Gulf of Cambay, Central and Southeastern Arabian Sea, including the Lakshadweep Islands area, Maldives and the Comorin area.

Scattered low to medium-level clouds with embedded weak to moderate convection lay over North and Southwest Arabian Sea.

*PROBABILITY OF CYCLOGENESIS (FORMATION OF DEPRESSION) DURING NEXT 168 HRS:

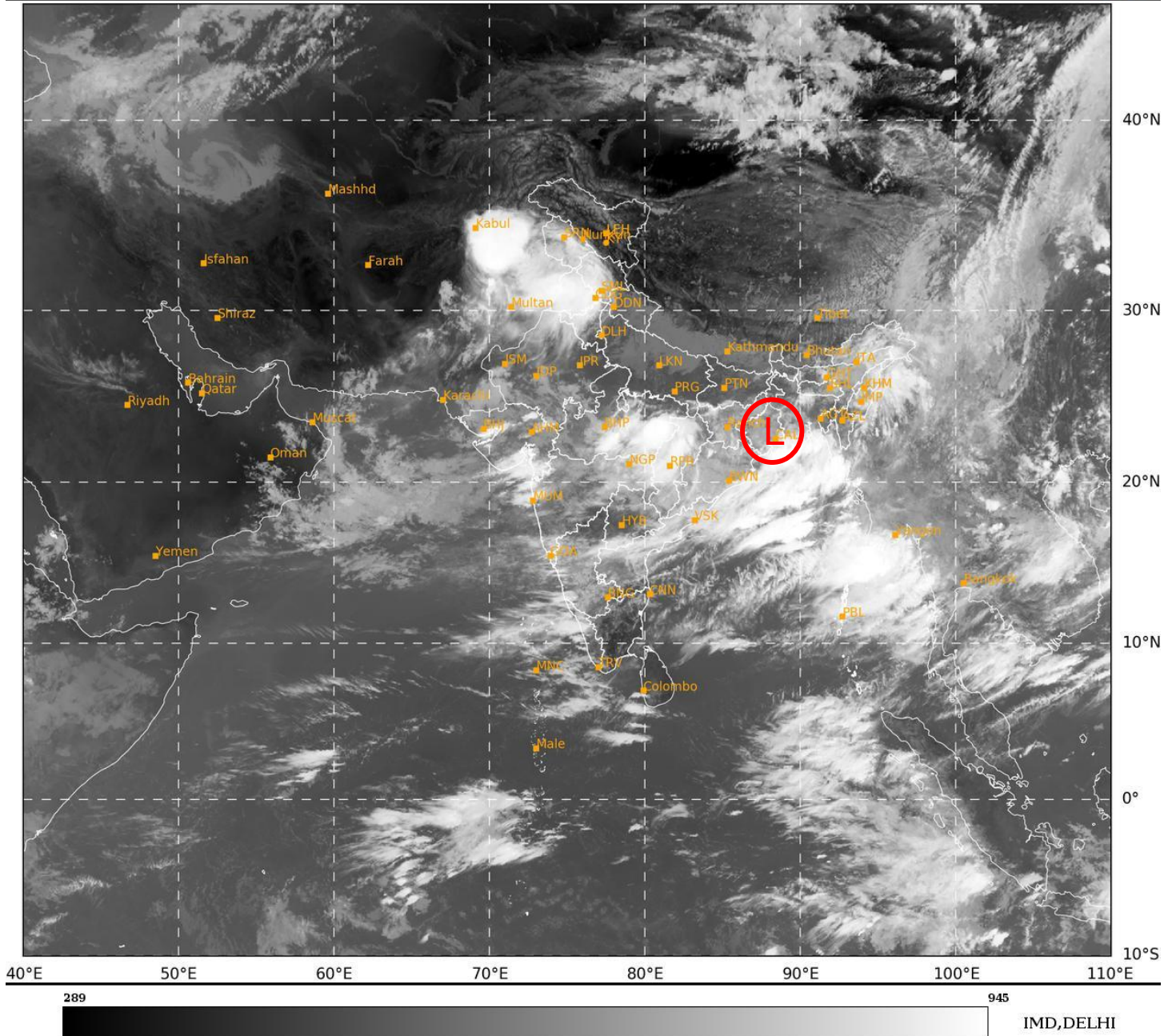
24 HOURS	24-48 HOURS	48-72 HOURS	72-96 HOURS	96-120 HOURS	120-144 HOURS	144-168 HOURS
NIL	NIL	NIL	NIL	NIL	NIL	NIL

*NOTE: EVERY 24HR FORECAST IS VALID UPTO 0300 UTC (0830 IST) OF NEXT DAY

REMARKS: NIL

SAT : INSAT-3DR IMG
IMG_TIR1 10.8 um
L1C Mercator

06-07-2025/(0445 to 0511) GMT
06-07-2025/(1015 to 1041) IST



L: Low Pressure Area

Cloud distribution: (a) Isolated: <25%, Scattered:25-50%, Broken: 51-75%, Solid:>75%, Convection Intensity: (a) Weak: Cloud Top Temperature(CTT)>-25°C,(b)Moderate:CTT:-25°Cto-40°C,(c)Intense:CTT: -41°Cto -70°Cand(d)Very Intense::Less than -70°C
PROBABILITYOFCYCLOGENESIS(FORMATIONOFDEPRESSION):NIL:0%,LOW:1-33%,MODERATE:34-66%ANDHIGH:67-100%
ThisisaguidanceBulletinforWMO/ESCAPPanelMembercountries.VisitrespectiveNationalwebsitesforCountryspecificBulletins